

..... Conserving water, sustaining life .....

# SIZA WATER MANDELA DAY 67 MINUTES FOR 67 CHILDREN



In front of the new classroom are from left Shayamoya Crèche teachers Lungi Ngubane and Mduduzi Mbhili, iLembe speaker Cllr. Lucky Makhathini, Siza Water MD, Shyam Misra, Cllr. John Phahla, R&B Civils' Mark Morgan and Shayamoya Crèche principal, Joyce Ndladla with some of the crèche pupils. Photo: Jacqueline Herbst.

Siza Water is always looking for legacy projects that make a difference in the lives of the community within our concession area and beyond. This Mandela Day, in partnership with local contractors, R&B Civils, we decided to build a new classroom for the 67 pupils of Shayamoya Crèche.

The new classroom will enable children, aging from zero to four years old, to be split into two classrooms and better accommodate their different educational needs. "We always look at legacy projects that will improve the quality of education and create a base from which they can strive to improve and add value to the community," said Siza Water's Managing Director, Shyam Misra.

"Mandela would not have wanted this to be a public holiday; he wanted people to be invested in society in order to build a legacy to put South Africa on a journey of empowerment. That is what this project is about," Misra said.

Misra said he was grateful to R&B Civils who provided the labor and was happy with the quality of the building. iLembe District Municipality speaker, Cllr. Lucky Makhathini was delighted with the project, saying children were close to Mandela's heart due to him not seeing them during his 27 years in prison.

"This does not look like a R100 000 project done in two weeks; it is beautiful. If Siza Water and R&B Civils could be multiplied, this country would be a better place." Makhathini said. Ward Councillor, John Phahla said Siza Water's existence in the community was noticed and urged them to keep up the good work while Principal Joyce Ndladla explained how the new classroom was a blessing as the older kids who wanted to play could now be separated from the babies who needed to take naps during the day.

# PROJECTS THAT IMPROVE LIVES



## TAFFENI RESERVOIR

Construction of a 2.5 million litre Reservoir Cell and Rising Main to meet infrastructure demands of the new Elaleni and Zululami developments are under way. The project which started in March this year is expected to be completed by December 2019. The engineer for the R15 million Taffeni reservoir is Bosch Projects.

## BALLITO HILLS SANITATION

A new Sewer Pump Station and Rising Main which will serve the new Ballito Hills development is in the pipeline. Pending outstanding approvals, the R20 million

project will commence soon with construction being carried out by Dartingo Consulting Engineers.

## WATER AND SEWER MASTER PLANNING

In order to ensure we develop infrastructure efficiently, Siza Water has engaged the services of SMEC to update our Bulk Water and Sanitation Master Plan.

This will ensure that future developments are catered for and will prevent delays in implementing projects to facilitate the growth of the Dolphin Coast.

## REFLECTING ON 20 YEARS

Stimela Nxumalo, Heather Joffe and Lilly Rajah have been with Siza Water for the past 20 years and this is what they had say:



**LILLY RAJAH**  
CUSTOMER SERVICES MANAGER

“ The implementation of the recycling plant in 2015, to ensure that we were able to provide a sustainable service to the public during the drought. The customers accepted the change positively.”



**FUNOKWAKHE NXUMALO**  
PLUMBER

“ I have grown and learnt so much over the past 20 years. Siza helped me to get my driver's licence, sent me on training and I qualified as a Plumber and am now a Team Leader.”



**HEATHER JOFFE**  
HUMAN RESOURCE MANAGER

“ Being involved in improving the lives of our staff through our training and development. Seeing them achieve their goals and grow into skilled, qualified, confident employees is a great motivation.”

# DID YOU KNOW ?

## ABUSE AND MISUSE OF SEWERAGE SYSTEMS

### SANITATION PROBLEMS/CHALLENGES

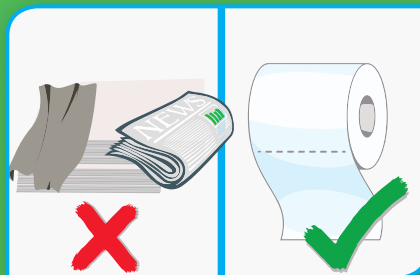
- Placing rubble on top of sewer manholes not only obscures access to infrastructure to carry out preventative maintenance but also damages the covers which leads to pieces of rubble entering the sewer line, causing blockages and spillages.
- Using incorrect paper like cardboard, newspaper or even rags instead of toilet paper causes blockages and spillages as these papers cannot flow into the sewer line.
- Excavations that are done without first identifying services in place damages our pipes, causing sewer to spill into streams.
- When consumers connect themselves into the sewer system, correct procedures to prevent sand from entering the pipeline is not followed. This leads to sand blocking the lines and causes spillages.
- Insufficient water during toilet flushing causes solids to block the line which leads to spillages.

## TIPS TO PREVENT SEWER SPILLAGES AND LEAKS:

- Do not dump rubble on top of sewer manholes; rather take it to a legal dumping site.
- Always use appropriate toilet paper when going to the toilet.
- Find out where water infrastructure pipes are before starting any excavations so that you don't accidentally damage them.
- Never install your own sewer connection, always ask a qualified Plumber or call Siza Water.
- Always make sure the toilet bowl is full of water before flushing. Report any broken toilets so that they may be repaired before blockages occur.



**DO NOT** dump rubble on top of sewer manholes; rather take it to a legal dumping site.



**ALWAYS USE** appropriate toilet paper when going to the toilet



**FIND OUT** where water infrastructure pipes are before starting any excavations so that you don't accidentally damage them.



**NEVER** install your own sewer connection, always ask a qualified Plumber or call Siza Water.



**ALWAYS MAKE SURE** the toilet bowl is full of water before flushing. Report any broken toilets so that they may be repaired before blockages occur.

# TARIFF

## INCREASE IN WATER & SEWER TARIFFS 2019 / 2020

Dear Customer,

Kindly note Water and Sanitation charges are regulated by Ilembe District Municipality for Siza Water (RF) (Pty) Ltd. This new tariff is effective from July 2019 billing.

PROPOSED TARIFF	RESIDENTIAL	NON-RESIDENTIAL / COMMERCIAL
Water Basic Per Meter	R 146.09	R 146.09
Special Residential Water Basic	R 89.96	N/A
Water Basic Per Meter– Indigent	R 0.00	N/A
Water 0 - 10 Kl/M	R 0.00	R 0.00
Water > 10 - 30 Kl/M	R 17.70	R 17.70
Water > 30 - 40 Kl/M	R 23.05	R 23.05
Water > 40 - 50 Kl/M	R 36.96	R 36.96
Water > 50 Kl/M	R 46.22	R 46.22
Water Availability Per Lot	R 168.57	R 168.57
Sewer Basic Per Meter	R 354.04	R 354.04
Sewer Basic Per Meter (Special Residential & Registered Indigent Only)	R 176.96	N/A
Sewer Basic – Caravan Park	R 3952.26	-
Sewer Consumption – Per Kl	R 12.57	R 12.57
Sewer Consumption – Per Kl (Special Residential & Registered Indigent Only)	R 6.39	N/A
Sewer Availability Per Lot	R 659.40	R 659.40

\* Excluding VAT



Please help improve our service by updating your mobile and email details to enhance communication.

Customers can register their mobile numbers and email addresses to receive alerts from us. These can be sent to [info@sizawater.com](mailto:info@sizawater.com) or contact our Customer Services Department on **032 946 7200** (during office hours only and please state your address). **Control Room Tel: 032-946 3188, Cell: 0712985206 or Email: siza.callcentre@sizawater.com**

AFROSPIC: Branding Studio, JICA 2433 B